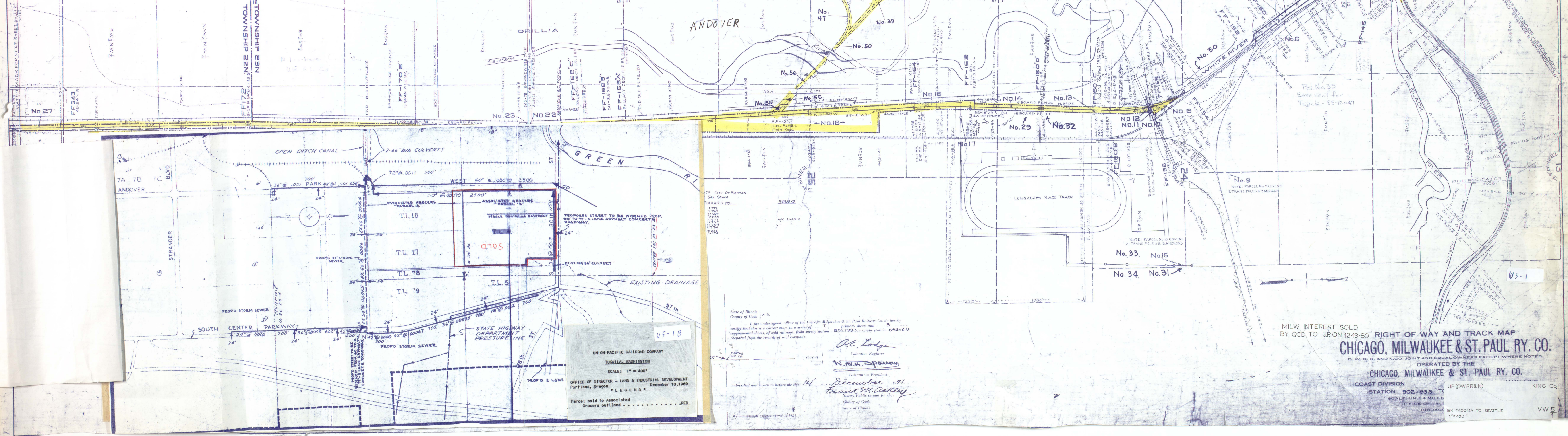


NO.	DATE	BY	DESCRIPTION	ACRES	SECTION	TOWNSHIP	RANGE	COUNTY
1	1-13-10
2	1-27-10
3	11-11-10
4	11-11-10
5	11-11-10
6	11-11-10
7	11-11-10
8	11-11-10
9	11-11-10
10	11-11-10
11	11-11-10
12	11-11-10
13	11-11-10
14	11-11-10
15	11-11-10
16	11-11-10
17	11-11-10
18	11-11-10
19	11-11-10
20	11-11-10
21	11-11-10
22	11-11-10
23	11-11-10
24	11-11-10
25	11-11-10
26	11-11-10
27	11-11-10
28	11-11-10
29	11-11-10
30	11-11-10
31	11-11-10
32	11-11-10
33	11-11-10
34	11-11-10
35	11-11-10
36	11-11-10
37	11-11-10
38	11-11-10
39	11-11-10
40	11-11-10
41	11-11-10
42	11-11-10
43	11-11-10
44	11-11-10
45	11-11-10
46	11-11-10
47	11-11-10
48	11-11-10
49	11-11-10
50	11-11-10
51	11-11-10
52	11-11-10
53	11-11-10
54	11-11-10
55	11-11-10
56	11-11-10
57	11-11-10
58	11-11-10
59	11-11-10
60	11-11-10
61	11-11-10
62	11-11-10
63	11-11-10
64	11-11-10
65	11-11-10
66	11-11-10
67	11-11-10
68	11-11-10
69	11-11-10
70	11-11-10
71	11-11-10
72	11-11-10
73	11-11-10
74	11-11-10
75	11-11-10
76	11-11-10
77	11-11-10
78	11-11-10
79	11-11-10
80	11-11-10
81	11-11-10
82	11-11-10
83	11-11-10
84	11-11-10
85	11-11-10
86	11-11-10
87	11-11-10
88	11-11-10
89	11-11-10
90	11-11-10
91	11-11-10
92	11-11-10
93	11-11-10
94	11-11-10
95	11-11-10
96	11-11-10
97	11-11-10
98	11-11-10
99	11-11-10
100	11-11-10



UNION PACIFIC RAILROAD COMPANY
 TULLILA, WASHINGTON
 SCALE: 1" = 400'
 OFFICE OF DIRECTOR - LAND & INDUSTRIAL DEVELOPMENT
 Portland, Oregon
 December 10, 1969
 * LEGEND *
 Parcel sold to Associated Grocers outlined RED

State of Illinois
 County of Cook
 I, the undersigned, officer of the Chicago, Milwaukee & St. Paul Railway Co. do hereby certify that this is a correct map, in a series of primary sheets and supplemental sheets, of said railroad, from survey station 502+93.3 to survey station 886+210 prepared from the records of said company.
 O.E. Lodge
 Valuation Engineer
 W.M.H. Sperry
 Assistant to President
 December 10, 1969
 Frank M. Coker
 County of Cook
 State of Illinois
 My commission expires April 10, 1971

MILW INTEREST SOLD BY QCD TO UP ON 12-19-80
 RIGHT OF WAY AND TRACK MAP
CHICAGO, MILWAUKEE & ST. PAUL RY. CO.
 O. W. R. AND N. G. JOINT AND EQUAL OWNERS EXCEPT WHERE NOTED.
 OPERATED BY THE
CHICAGO, MILWAUKEE & ST. PAUL RY. CO.
 COAST DIVISION STATION 502+93.3 TO UP (OWRR&N) KING CO.
 SCALE: 1" = 4 MILES
 OFFICE 33 WALL CHICAGO
 BR TACOMA TO SEATTLE 1" = 400' VW 5